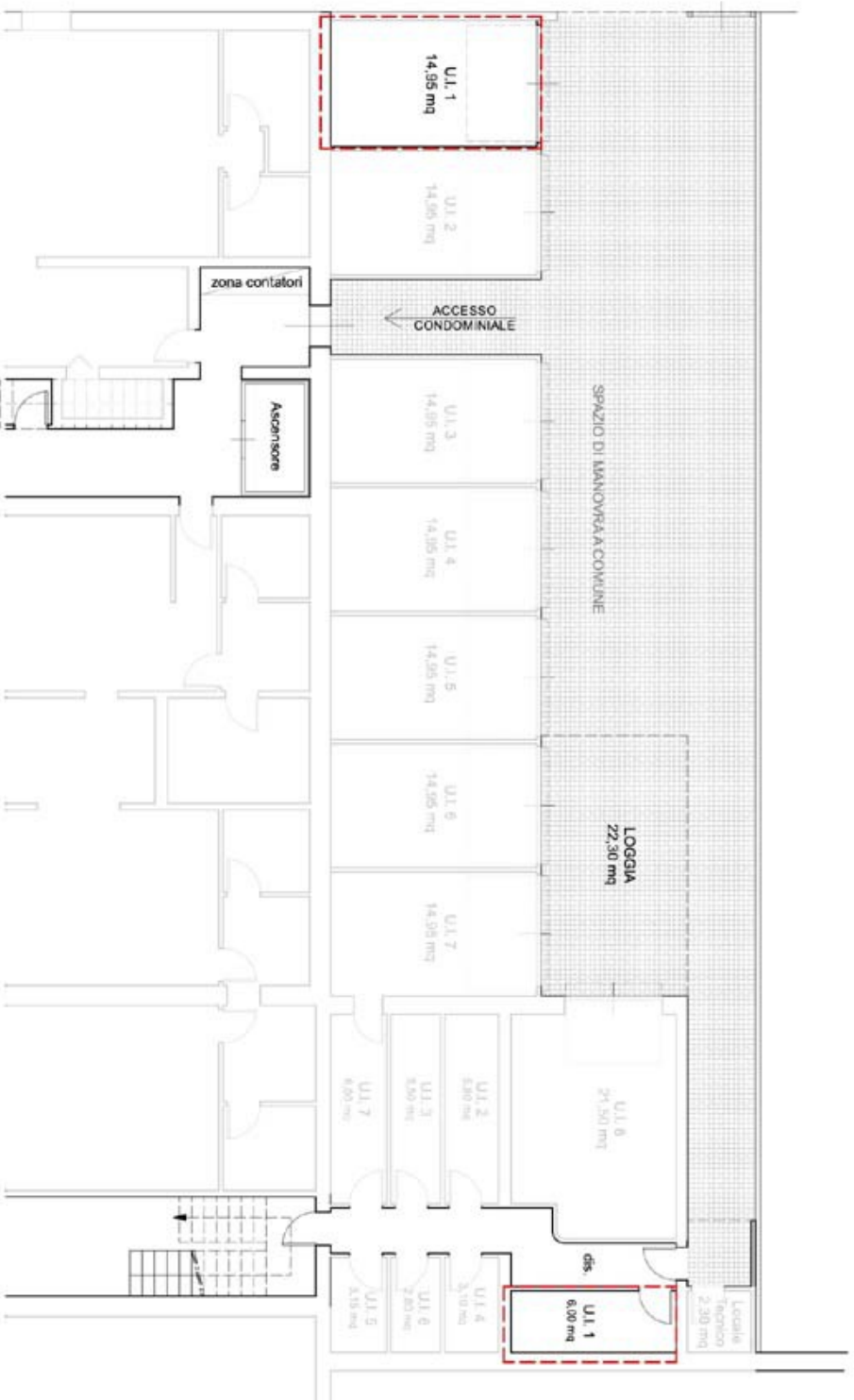


APPARTAMENTO N. 1 - PIANO TERRA
CANTINA - AUTORIMESSA

| U.I. | Sup. F.T. | Cantina | Soffitta | V | Terr. | Pc | Pa | SC |
|----------|--------------|------------|------------|------------|-------------|-------------|------------|--------------|
| | 1008 mq | 50% mq | 50% mq | 10% mq | 30% mq | 50% mq | 20% mq | |
| 1 | 109.3 | 7.5 | 0.0 | 0.0 | 53.0 | 17.3 | 0.0 | 137.6 |



BALDI & ASSOCIATI
 STUDIO BALDI & ASSOCIATI, INGEGNERIA E ARCHITETTURA
 Ing. Franco Baldi - Ing. Alessandro Baldi - Arch. Meri Ascari
 Arch. Tommaso CapPELLI - Arch. Giulia Baldi
 via romagnolo, 55, 21079 guazzada schiave, tel. 0371 21182 - 0371 218133, fax 0371 239119
 e-mail: studio@studiobaldiassociati.it - prodotto@studiobaldiassociati.it - pa@studiobaldiassociati.it

PROGETTISTA
 Ing. ALESSANDRO BALDI
 Arch. TOMMASO CAPPELLI

COMMITTENTE
TE di nardello
via roma, 100 - 20121 milano - tel. 02 57400000 - fax 02 57400001
 www.te-nardello.it